

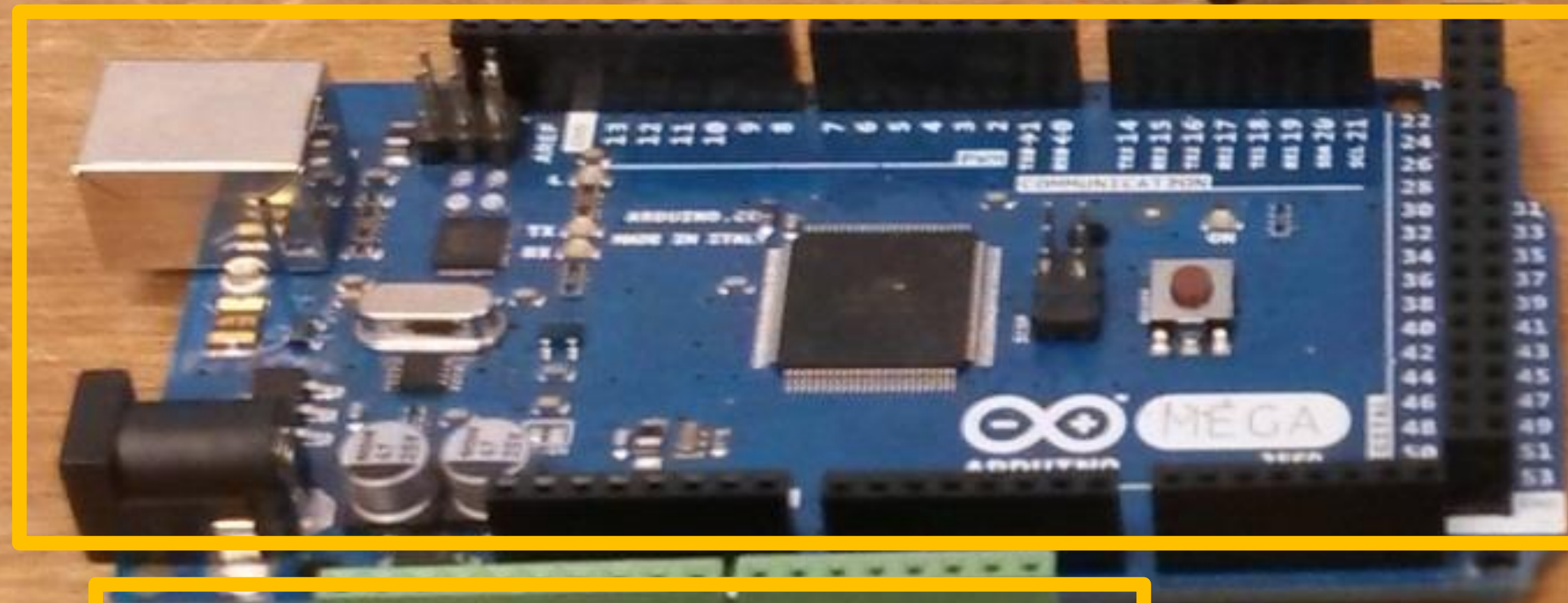
**12-24V DC Motor
(Mitsumi M25N-2R-14)**



15-24V DC Power Supply



Arduino Mega 2560



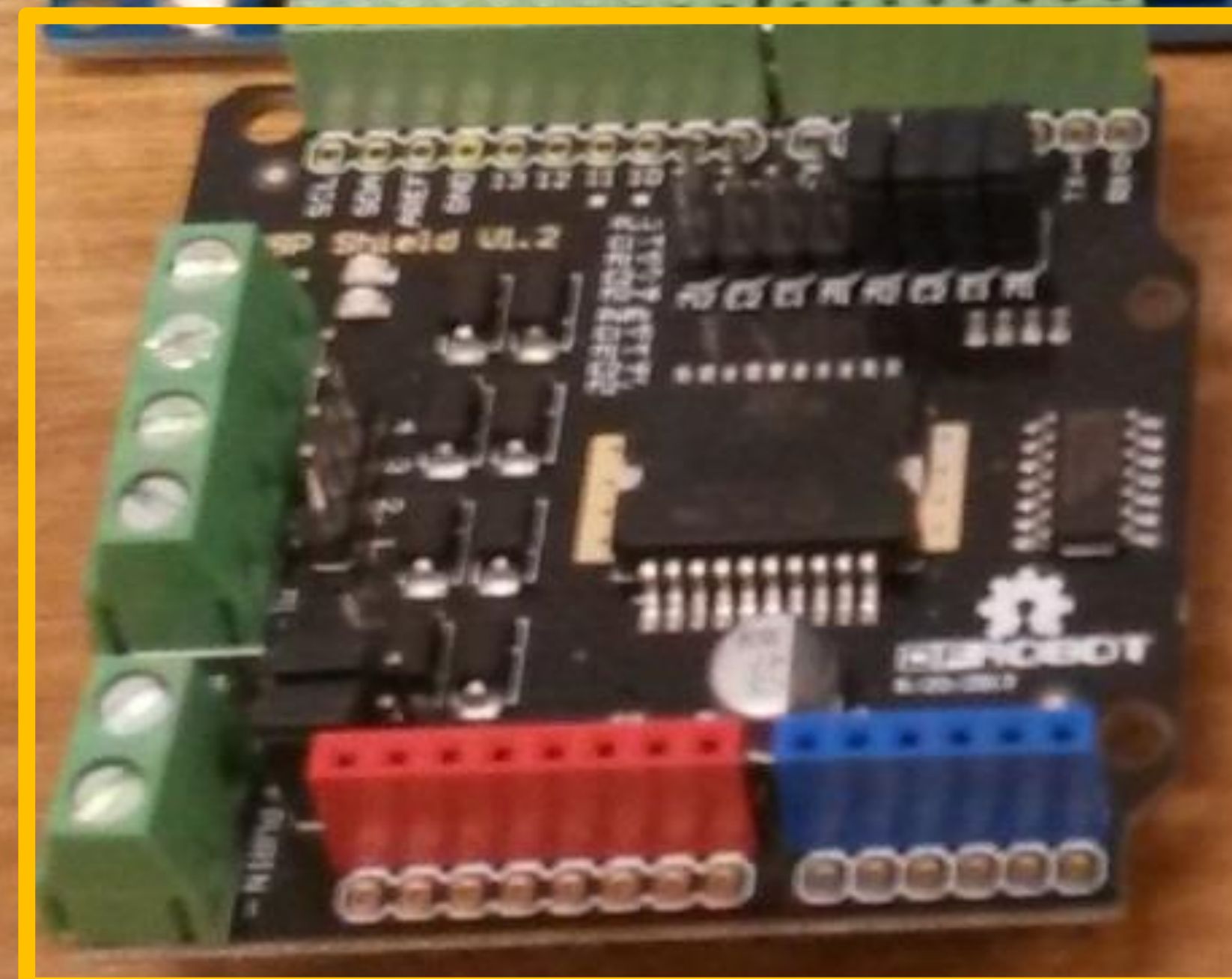
**USB A to B
Connector**



4 Male to Male Wires



**Female Barrel Jack
2.1mm x 5.5mm**



Motor Shield (DFRobot L298P)

**Small Flat-head
Screw Driver**

